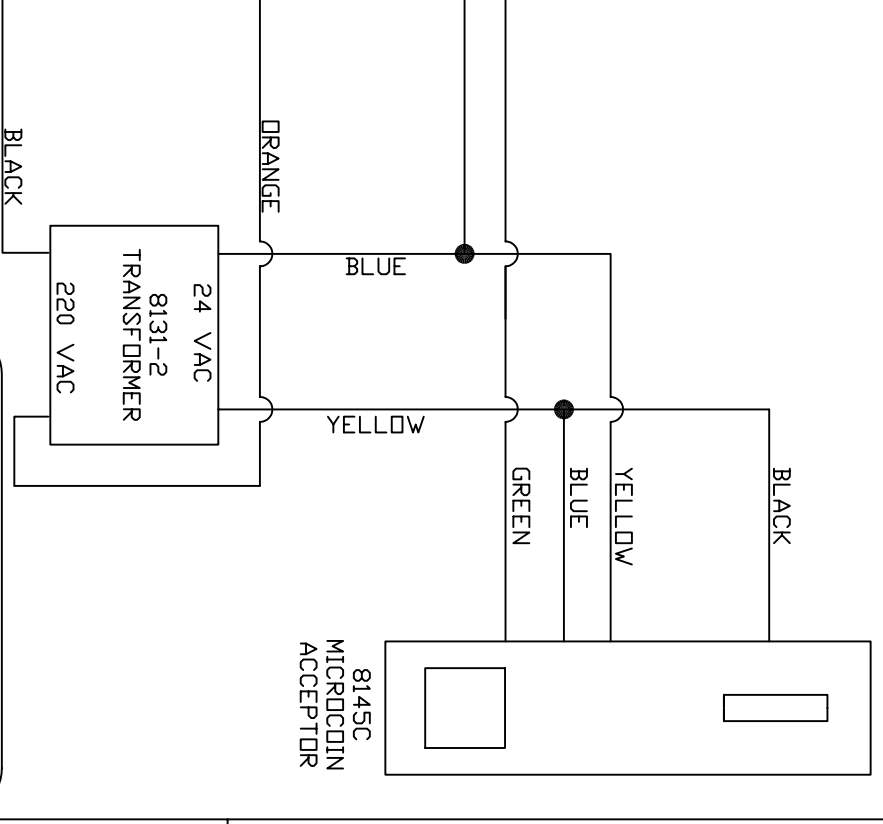
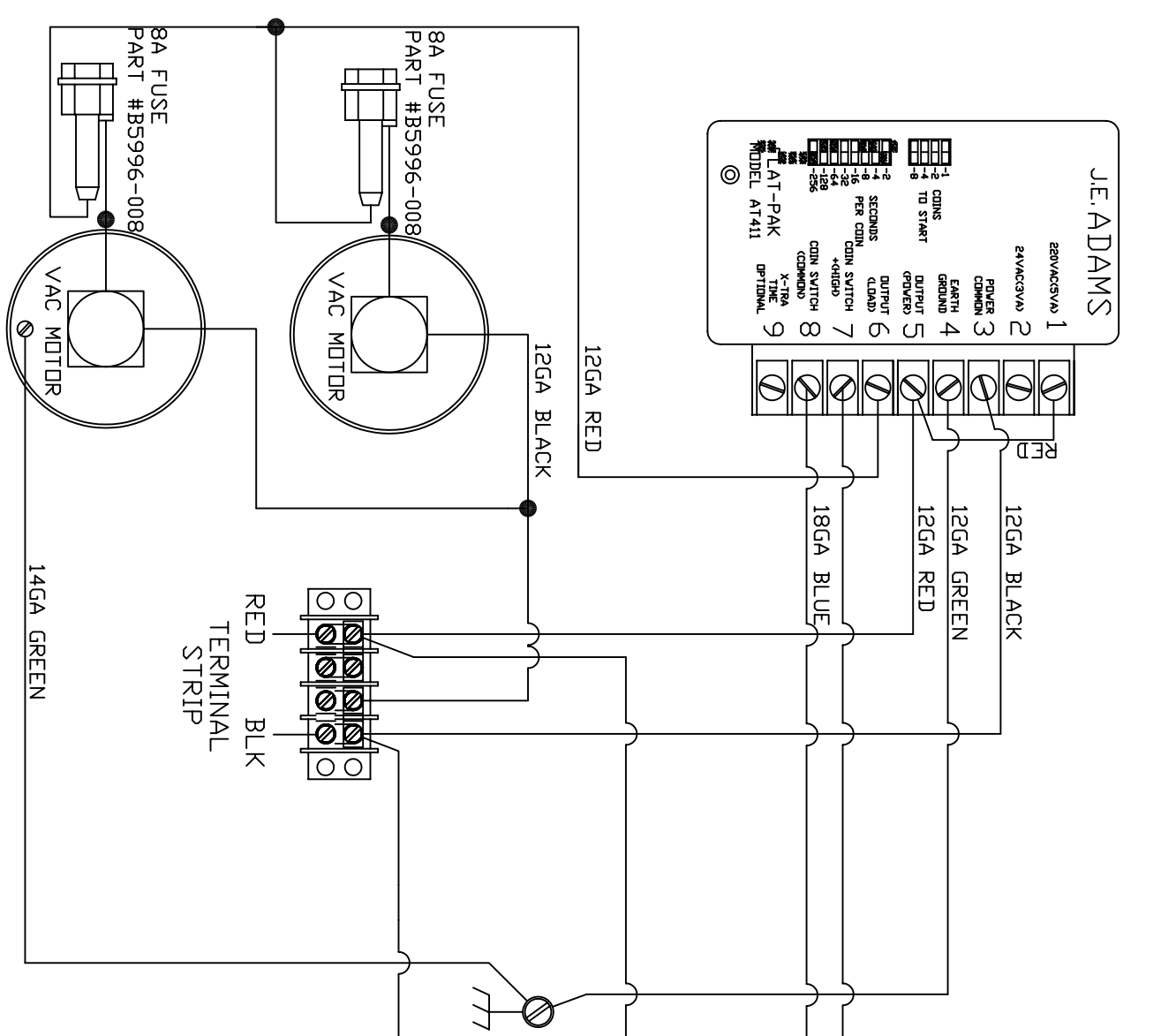
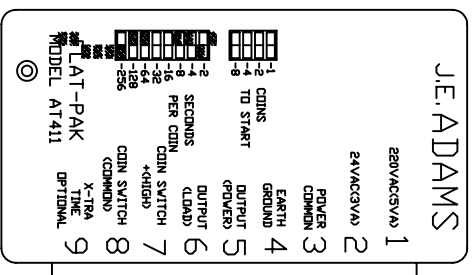


PART NO. 2 MOTOR SERIES

THIS DOCUMENT SHALL NOT BE REPRODUCED NOR SHALL THE INFORMATION THEREIN BE USED BY OR DISCLOSED TO OTHERS EXCEPT AS AUTHORIZED BY J.E. ADAMS INDUSTRIES

ITEM NO.	PART NO.	DESCRIPTION	QTY.
		BILL OF MATERIAL	



**!! IMPORTANT !!**  
 TERMINAL STRIP IS ON BACK SIDE OF TIMER PLATE IN LOCK BOX  
 FIELD WIRING MUST COMPLY WITH LOCAL AND NATIONAL ELECTRICAL CODES  
 \*15AMP SERVICE IS REQUIRED\*

REV		NO.		DESCRIPTION		DATE		BY	
<p>TITLE: 2 MOTOR_IDX_220V_8145C MICROCCIN</p> <p>UNSPECIFIED TOLERANCES: FRACT. ±1/32, 2 PL ±.020, 3 PL ±.010, ANGLE ±1.0°</p> <p>SCALE: -</p> <p>DRAWN BY: CK</p> <p>DATE: 6-23-10</p> <p>REL. FOR PROD.</p>									
<p>CEDAR RAPIDS, IOWA</p>					<p>PART NO. 2 MOTOR SERIES</p>				